



Traditional Health Workers

*Current Implementation and
a Vision for the Future*

Changing healthcare
to work for you.

Created for the Traditional Health
Worker Commission
February 27, 2017



Traditional Health Worker Commission Presentation Overview

- Appreciation for the Opportunity to Share Today
- Who is AllCare Health?
- Current Internal Use of THWs
- Current Regional Use of THWs
- A Vision for the Future
- Questions?

Susan Fischer, M.Ed.

Health and Education Integration Coordinator

susan.fischer@allcarehealth.com

- Background: Educator, home visitor, system coordinator.
- Member of the AllCare Health's Community Engagement and Investment Team
- Partner, Mother, Daughter, and Community Member



Who is AllCare Health?



Our Mission: Working together to provide quality, cost-effective health care for our communities.

We're changing healthcare to work for the communities we are serving.

Who is AllCare Health?



We believe in Community.

We live here.

We believe in helping.

We believe in compassionate care.

We believe in forward thinking.

Current Internal Use of THWs

An Essential Part of Our Care Coordination Teams

- Currently have 6 Community Health Workers on Staff
 - 2 Based in Jackson County
 - 3 Based in Josephine County
 - 1 Based in Curry County
- Care Coordination Team Structure
 - Team Lead, ICM, TOC, CHW
 - Supported by Medical Directors and Others

Diana Cooper

Lived Experience, Local Dedication

- Community Health Worker focusing on Jackson County
- Born and raised in Brookings, OR
- Embodying the Power of Lived Experience
- Assisting with Barriers, Encouraging Growth
- Meeting Clients Where They're At
- Seeing Clients Become Their Own Advocates
- The Challenge of Affordable Housing
- Diana's Magic Wand Wish



Current External Use of THWs

An Essential Part of Our Community Services

- Listening to Local Needs and Readiness
- Rogue Community College Training Program
- Continuous Quality Improvement
- Gathering Qualitative and Quantitative Data
- Letting the Clients Guide Our Work

Current External Use of THWs

An Essential Part of Our Community Services

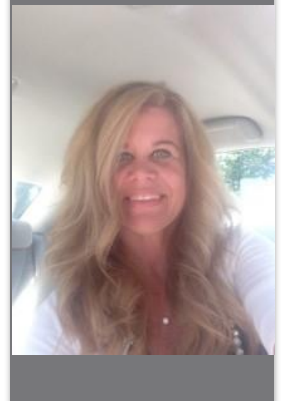
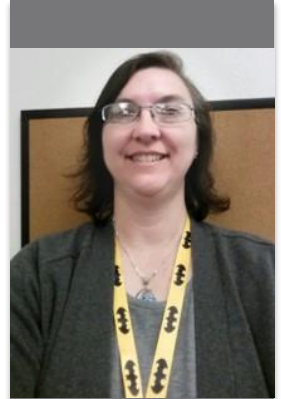
- Investing in Our Community Partners
 - *Southern Oregon Head Start*
Serving Jackson and Josephine Counties
 - *Josephine County Public Health*
Serving at DHS SSP, Goodwill, and UCAN
 - *Curry Community Health*
Serving at the Brookings Harbor School District



Heather Ackerman, Serving Elementary Schools

Lisa Harris, Serving DHS SSP, Goodwill, & UCAN

- Who are Heather and Lisa?
- Employed through Josephine County Public Health
- Deployed to Distinct Locations, but truly a TEAM
- Hired prior to CHW Training
- Periodic Meetings with Site Supervisors to Make Course Corrections



allcarehealth

Kerri Ann Young

Siskiyou Pediatrics Clinic, L.L.P.



- Local Clinics and Providers are Using THWs
- Who is Kerri Ann?
- Addressing Barriers, Attending Appointments, Being a Bridge
- “I can’t believe a position like yours exists...”
- “Even a CHW can’t make it rain in a drought...”
- Kerri Ann’s Magic Wand Wish



allcarehealth

A Vision for the Future

Internal and External Expansion & Strengthening

- Continued Funding of Current Pilots and Project
- Support of Similar Positions in the Community
- Education about and Promotion of Positions
- Exploration of Models for Sustainable Funding
- Support of THW PLCs and Professional Development



Questions?